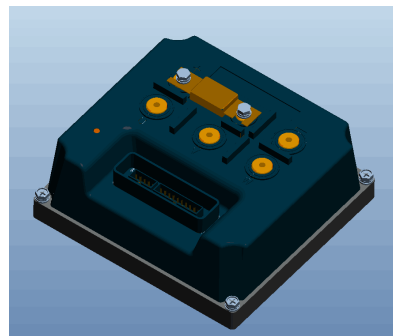
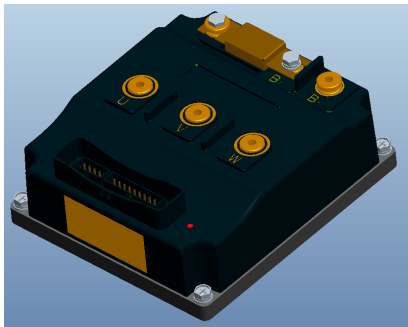




**MQCON 美驱**



**—FOC DC brushless motor controller**

## Company Profile

MQCON Science and Technology Co., Ltd. is a high-tech enterprise specializing in the motor controller for BLDCM and PMSM which are used in electric vehicle drive system. MQCON is committed to provide the world's leading sine-wave drive solutions on high-power DC brushless motor for numerous domestic and foreign manufactures of product, such as electric motorcycle, permanent magnet brushless motor, mini-electric vehicle, special electric vehicle etc.

With a professional and technical elite team led by national experts, MQCON has actively developed research cooperation closely with several famous universities and scientific research institutes both in China and abroad, and thus ensure the leading technology of our products .Nowadays MQCON has been grown into a technology expert and industry leader who can provide Sine-Wave drive solutions on high-power brushless DC motor, all of these depend on long-term independent innovation of science and technology.

## Product Introduce

### SVMC Series



#### Mini SVMC Series

Model NO.	Voltage range	DC max current	Phase Max Current
SVMC7245	48V-72V	45A	130A
Size: 164*120*62mm			

Mid SVMC Series

Model NO.	Voltage range	DC max current	Phase Max Current
SVMC7260	48V-72V	60A	175A
SVMC9645	96V	45A	130A
MidSize: 215*147*62mm			

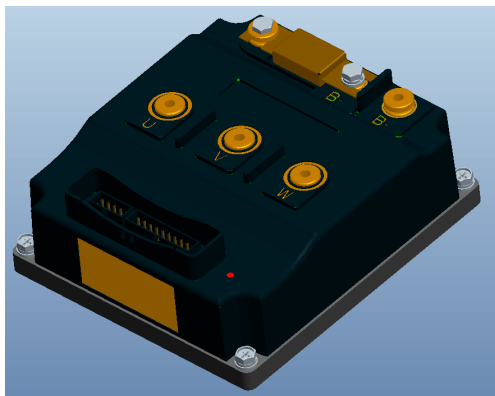
Big SVMC Series

Model NO.	Voltage range	DC max current	Phase Max Current
SVMC7280	48V-72V	80A	200A
SVMC72100	48V-72V	100A	250A
SVMC72150	48V-72V	150A	350A
SVMC9680	96V	80A	200A
BigSize :249*147*62mm			

Super SVMC Series

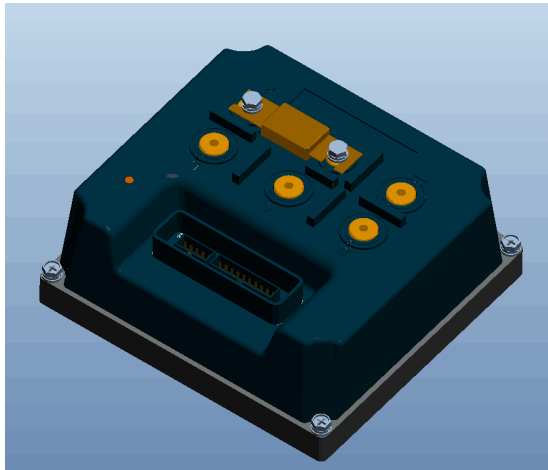
Model NO.	Voltage range	DC max current	Phase Max Current
SVMC72200	48V-72V	200A	450A
SVMC96120	96V	120A	300A
SuperSize :283*147*62mm			

SSC series



Model NO.	Voltage range	DC max current	Phase Max Current
SSC7280	48V-72V	80A	200A
SSC72100	48V-72V	100A	250A
SSC72150	48V-72V	150A	350A
SSC9680	96V	80A	200A
Size:186*165*70mm Weight:2kg			

## MQ series



Model NO.	Voltage range	DC max current	Phase Max Current
MQ72220	48V-72V	220A	500A
MQ72250	48V-72V	250A	550A
MQ96150	96V	160A	360A
Size:203*189*87mm		Weight:3.2kg	

## Product Features

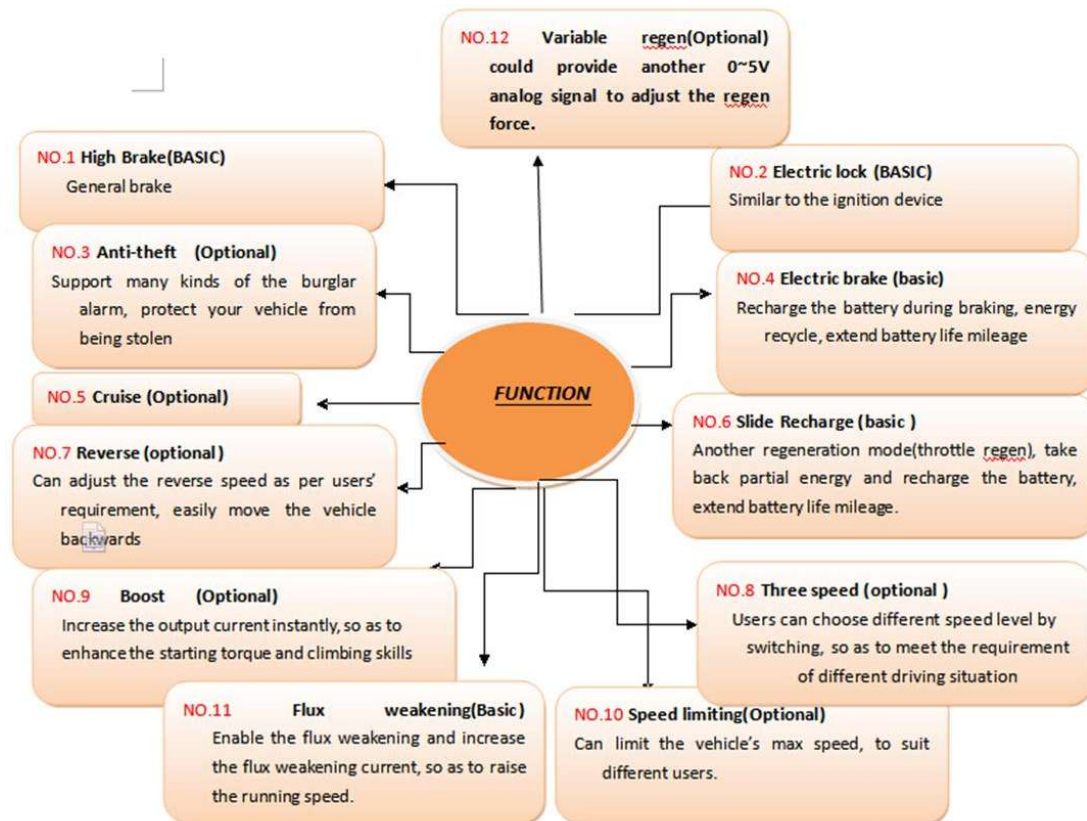
- 1, FOC-180 ° sinusoidal drive controller applied to BLDCM or PMSM..
- 2, Various built-in protection: over-current protection, overload protection, over-temperature protection, speed protection, over-voltage protection ,under-voltage protection and so on, effectively ensuring the safety of electronic control system and vehicle.
- 3, It takes only 3 minutes for the motor to be well matched on its best electronic angle at the first time.
- 4, The rich peripheral interfaces: reverse,speed limit, brake regen, throttle regen, various regen force,boost,anti-theft,reverse,neutral....

.....

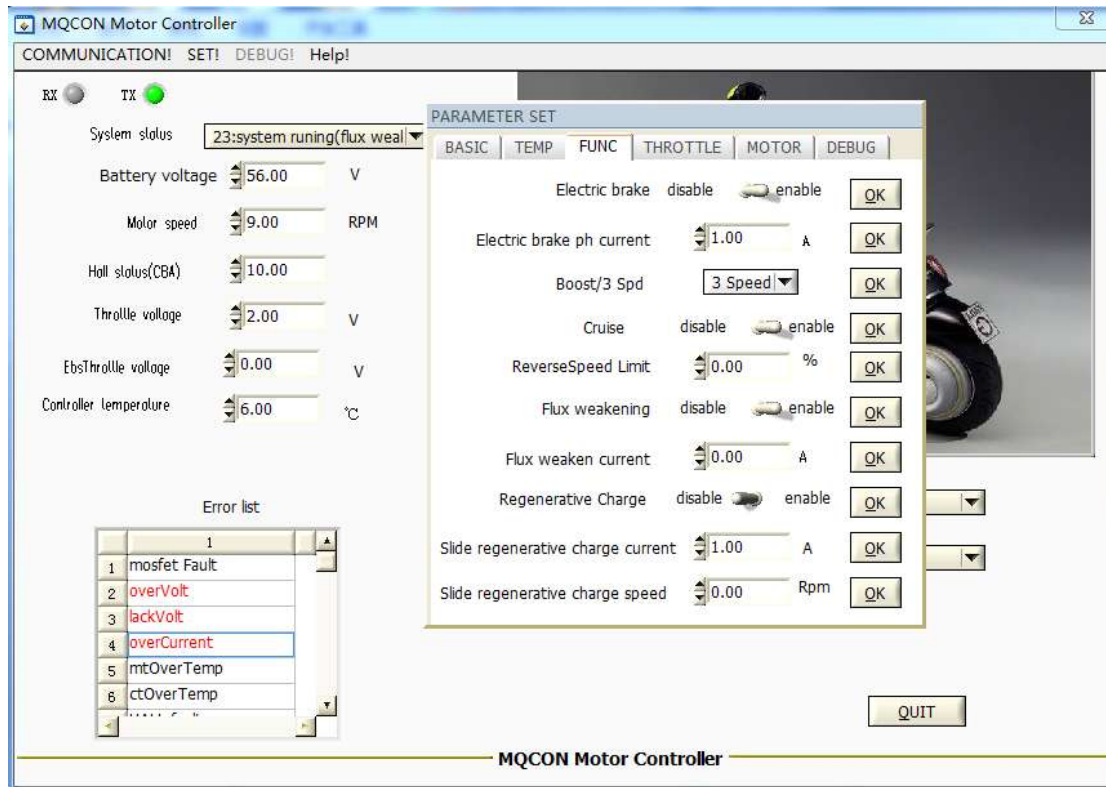
Could customize the features according to customer's special requirement.

- 5, Parameter programmable via 485 module bus ,and CAN bus is also optional to communicate with body instrument and BMS.
- 6, System status and fault intelligent management system can effectively monitor the current system operating mode external input state ,the case of system failure, and the LED flashes at the same time to facilitate the diagnosis and maintenance.
- 7, Waterproof ratings : IP65

## 8. Function Options



## Software interface



## Contact us :

MQCON Science and Technology CO.,Ltd

Overseas business Dpt: Emily Hu

whatsApp : 0086-13921528672

Email: [MQCON8@126.com](mailto:MQCON8@126.com)

website: [www.MQCON.com](http://www.MQCON.com)

Address : Wuxi City, China